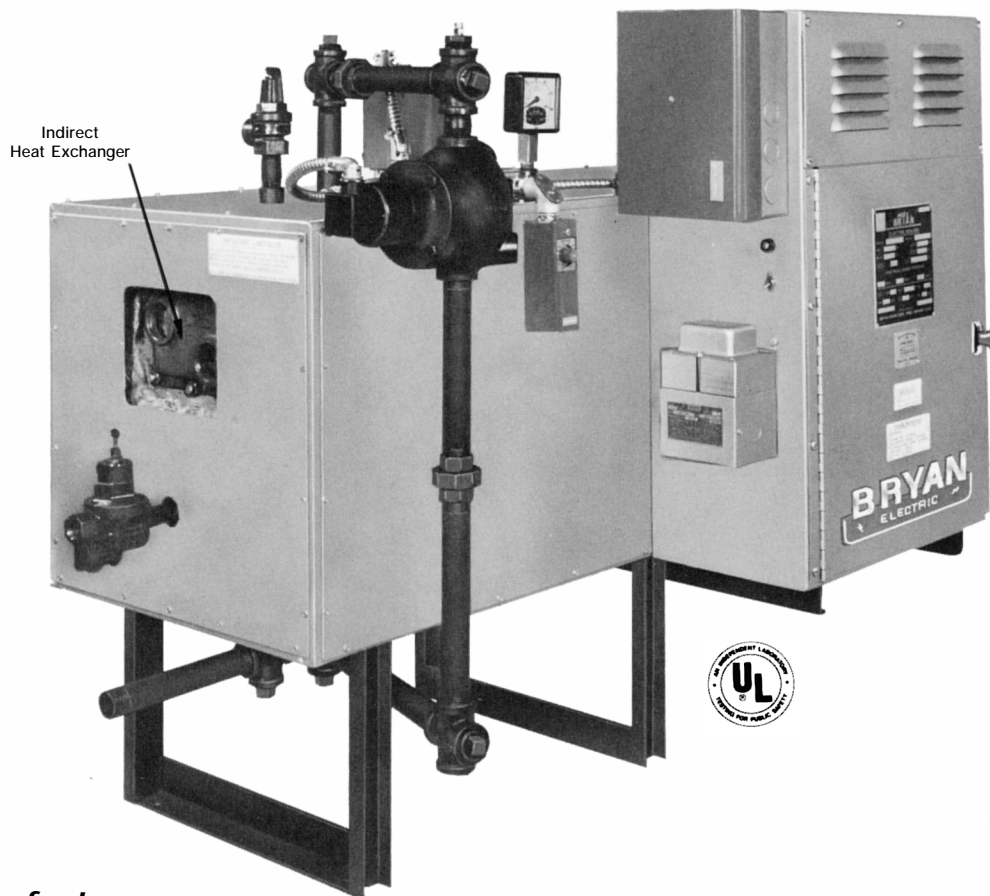


Bryan Electric Indirect Hot Water Supply Heaters

For commercial and industrial water heating applications
BE-WT Series, 15 to 330 kw



Note these features:

Long life indirect heat exchanger and incoloy sheathed electric heating elements

All brass and copper finned-tube, high-efficiency heat exchanger transfers heat from hot heater water to service water flowing through exchanger. This results in both long electric heating element and long heat exchanger life with trouble-free operation. Special incoloy alloy also substantially contributes to electric element life as compared to copper sheathing used in conventional electric heaters.

Economical scale-free boiler operation

Scale-free operation means higher continuous heat transfer efficiencies and reduction of maintenance costs. Conventional electric heaters generally require periodic shutdown for descaling of elements, Bryan's indirect closed system heating means little or no scale build-up.

Corrosion-resistant operation

Corrosive and scale forming service water does not come in to direct contact with steel heater parts and electric heating elements. Service water being heated circulates only through the copper indirect heat exchanger within a temperature range that eliminates or minimizes chemical reactions such

as oxidation or precipitation, the principal causes of corrosion and scale formation.

Condensation free

The Bryan indirect heater operates at water temperatures that eliminate problems caused by moisture from surrounding air condensing as water contributing to rusting and wet floors.

Quality construction

Structural framework supports primary hot water vessel and power panel cabinet. Vessel and frame protected by a heavy 16 gauge steel, zinc-coated jacket attractively finished with two coats of enamel.

Applications

Versatile for all typical commercial and industrial applications, such as schools, apartments, hotels and motels, laundries, restaurants, hospitals, factories, etc. The heater may be used in conjunction with a storage tank (the tank and accessories may be supplied by Bryan as a packaged "Water-Pak") or if the application permits, may be applied as a "tankless" installation. Available alternative to fossil fuel units when strict emission requirements must be met.

BRYAN BOILERS

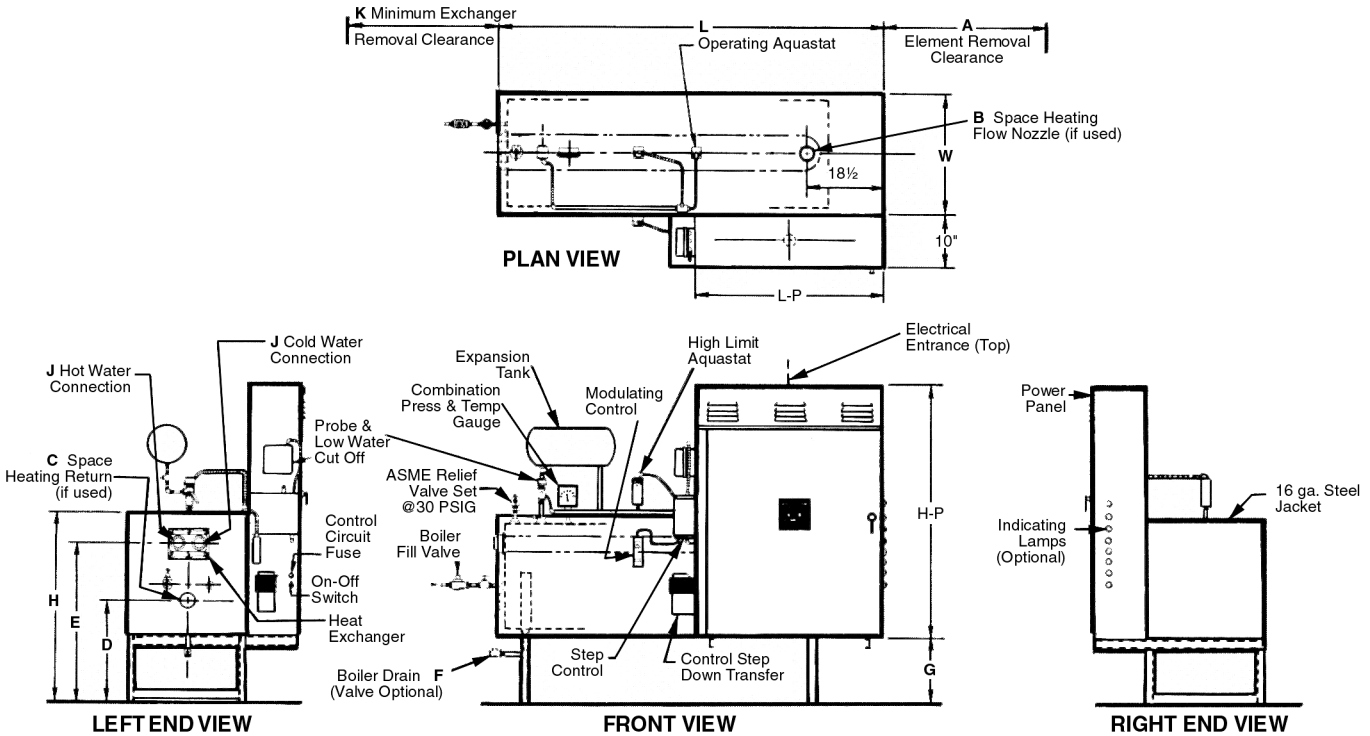
Bryan electric indirect hot water supply heaters

Specifications and dimensions

Size range: 15-330 kw (49,000 to 1,081,080 BTUH) with the following voltage options: 15 kw to 120 kw – 240 volt/1 phase; 15 kw to 180 kw – 208 or 240 volts/3 phase; 15 kw to 330 – 460 or 480 volts/3 phase

Equipment furnished: Combination boiler thermometer and pressure gauge, low water cutoff, operating temperature control, high limit temperature control, indirect heat exchanger, automatic boiler fill valve, boiler relief valve, boiler drain cock, magnetic contactors, pilot switch, power panel, insulated jacket and expansion tank. All equipment installed and wired. (Expansion tank may be shipped loose depending on transportation mode to prevent damage in shipment.) A fused disconnect switch to be furnished by installer.

When ordering: Please specify model, kw, type of system (tank, tankless, etc.). Initial and final temperature water required, water flow rate (gal./hr. or gal./min.), electrical characteristics (volts, phase, cycles), optional equipment or special requirements. Refer to BE Series brochure #3660 for further information.



RATINGS AND DIMENSIONS (in inches)

MODEL	Input KW	Output BTU's	Recovery Capacity (GPH) 40° to 140°F*	L	W	H	A	B	C	D	E	F	G	J	K	L-P			H-P		
																480/3 60	208/3 60	240/1 60	480/3 60	208/3 60	240/1 60
BE-15-WT	15	49,140	59	37	18	25	15	2	2	12	18 1/2	3/4	7	1 1/2	19	20	20	30	24	24	36
BE-30-WT	30	98,280	117	44	20	32	30	2	2	17	25 1/2	3/4	12	1 1/2	26	20	20	30	24	24	36
BE-45-WT	45	147,420	176	44	20	32	30	2	2	17	25 1/2	3/4	12	2	26	20	20	30	24	24	48
BE-60-WT	60	196,560	235	44	20	32	30	2	2	17	25 1/2	3/4	12	2	26	20	20	30	24	30	48
BE-75-WT	75	245,700	295	44	20	32	30	2	2	17	25 1/2	3/4	12	2	26	20	20	30	24	30	66
BE-90-WT	90	294,840	354	44	28	40	30	3	3	19 5/8	31 1/4	1	12	2	26	20	30	30	24	26	66
BE-105-WT	105	343,980	413	44	28	40	30	3	3	19 5/8	31 1/4	1	12	2	26	20	30	36	30	36	72
BE-120-WT	120	393,120	472	44	28	40	30	3	3	19 5/8	31 1/4	1	12	2	26	20	30	36	30	36	72
BE-150-WT	150	491,400	590	44	28	40	30	3	3	19 5/8	31 1/4	1	12	2 1/2	26	20	30	NA	30	48	NA
BE-180-WT	180	589,680	708	44	28	40	30	3	3	19 5/8	31 1/4	1	12	2 1/2	26	30	30	NA	36	48	NA
BE-210-WT	210	687,960	826	74	28	40	55	3	3	19 5/8	31 1/4	1	12	2 1/2	26	30	NA	NA	36	NA	NA
BE-240-WT	240	789,520	948	74	28	40	55	3	3	19 5/8	31 1/4	1	12	2 1/2	56	30	NA	NA	36	NA	NA
BE-270-WT	270	884,520	1,062	74	28	40	55	3	3	19 5/8	31 1/4	1	12	2 1/2	56	30	NA	NA	48	NA	NA
BE-330-WT	330	1,081,080	1,298	74	28	40	53	3	3	19 5/8	31 1/4	1	12	2 1/2	56	30	NA	NA	48	NA	NA

* NOTE: Indirect heaters have limitations as to maximum outlet temperatures and flow rates. Contact factory for recommendations for conditions that might vary greatly from this standard 40° to 140°F rating.

Dimensions and specifications are subject to change without notice. Consult factory for certified dimensions.



Bryan Steam Corporation — Since 1916

P.O.Box 27, Peru, Indiana 46970-0027 U.S.A.

Phone: 765-473-6651 • Internet: www.bryanboilers.com

Fax: 765-473-3074 • E-mail: bryanboilers@iquest.net